

DETAILS

1) D. J. VAN DER KAMM

2) THE PROPERTY IS SUBJECT TO THE ENCUMBRANCES OF RECORD AS SHOWN ON THE RECORD MAPS AND PLATS OF RECORD IN THE PUBLIC RECORDS OF THE COUNTY OF MONTFORD, TEXAS, AND TO ANY OTHER ENCUMBRANCES OF RECORD IN THE PUBLIC RECORDS OF MONTFORD COUNTY, TEXAS.

3) THE PROPERTY IS SUBJECT TO THE ENCUMBRANCES OF RECORD AS SHOWN ON THE RECORD MAPS AND PLATS OF RECORD IN THE PUBLIC RECORDS OF THE COUNTY OF MONTFORD, TEXAS, AND TO ANY OTHER ENCUMBRANCES OF RECORD IN THE PUBLIC RECORDS OF MONTFORD COUNTY, TEXAS.

$\Delta = 1704'00''$
 $R = 166.67'$
 $L = 49.63'$
 $T = 28.00'$
 $Ch. = S49°59'15''E$
 $49.44'$

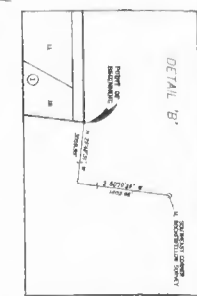
$\Delta = 0410'00''$
 $R = 427.76'$
 $L = 28.00'$
 $T = 29.98'$
 $Ch. = S37°26'15''E$
 $29.98'$

TRAVIS WOODS CORP.
 VOLUME 1154, PAGE 156
 D.E.C.T.

SENEY J. WATERS
 VOLUME 1108, PAGE 614
 D.E.C.T.

POINT OF BEGINNING

0201015991



JOHN CALVIN BLACKLOCK and ALINE VIRGINIA BLACKLOCK
 VOLUME 3865, PAGE 285
 D.R.T.C.T.

APPROVED BY THE CITY OF MONTFORD

CERTIFICATE OF APPROVAL

DUNAWAY ASSOCIATES, Inc.

TWIN CREEKS ADDITION PHASE I

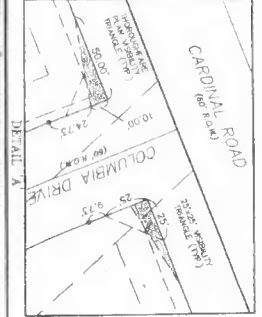
FINAL PLAT

BRING A 3" X 5" COPY OF THIS PLAT AND THE ORIGINAL RECORD MAPS TO THE CLERK OF COUNTY RECORDS, MONTFORD COUNTY, TEXAS, FOR RECORDING.

DATE: 10/27/2011

OWNER:
 CARDINAL ROAD I, LP
 PETER THOMAS
 MONTFORD, TEXAS 76063
 (817) 426-3113

ENGINEER/SURVEYOR:
 DUNAWAY ASSOCIATES, INC.
 1601 MERRILL CIRCLE, SUITE 100
 MONTFORD, TEXAS 76063
 PH: (817) 335-1123
 FAX: (817) 335-7437



After recording, return to the City of Montford, 1205 F. Grand Street, Montford, Texas 76063

Lot	Area	Area	Area	Area	Area
1	1.23	1.23	1.23	1.23	1.23
2	1.23	1.23	1.23	1.23	1.23
3	1.23	1.23	1.23	1.23	1.23
4	1.23	1.23	1.23	1.23	1.23
5	1.23	1.23	1.23	1.23	1.23
6	1.23	1.23	1.23	1.23	1.23
7	1.23	1.23	1.23	1.23	1.23
8	1.23	1.23	1.23	1.23	1.23
9	1.23	1.23	1.23	1.23	1.23
10	1.23	1.23	1.23	1.23	1.23
11	1.23	1.23	1.23	1.23	1.23
12	1.23	1.23	1.23	1.23	1.23
13	1.23	1.23	1.23	1.23	1.23
14	1.23	1.23	1.23	1.23	1.23
15	1.23	1.23	1.23	1.23	1.23
16	1.23	1.23	1.23	1.23	1.23
17	1.23	1.23	1.23	1.23	1.23
18	1.23	1.23	1.23	1.23	1.23
19	1.23	1.23	1.23	1.23	1.23
20	1.23	1.23	1.23	1.23	1.23
21	1.23	1.23	1.23	1.23	1.23

APPROVED BY THE CITY OF MONTFORD

CERTIFICATE OF APPROVAL

DUNAWAY ASSOCIATES, Inc.

APPROVED BY THE CITY OF MONTFORD

CERTIFICATE OF APPROVAL

DUNAWAY ASSOCIATES, Inc.

APPROVED BY THE CITY OF MONTFORD

CERTIFICATE OF APPROVAL

DUNAWAY ASSOCIATES, Inc.

APPROVED BY THE CITY OF MONTFORD

CERTIFICATE OF APPROVAL

DUNAWAY ASSOCIATES, Inc.

